

ENERGY

esk 165S 200 watt

SYSTEMS

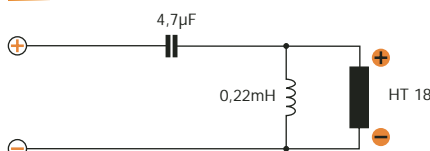


Technical Specifications

Component	2 way system	
Size	EV 165S woofer	165 mm (6"1/2)
	HT 18 tweeter	20 mm (3/4")
Power Handling (Watt)	peak	200
	continuous program	100
Impedance	Ohm	4
Frequency response	Hz	60-23k
Sensitivity	dB/SPL	92
Woofer outer diameter	mm	163
Woofer mounting hole diameter	mm	143
Woofer magnet size	mm	90
Woofer total depth	mm	58
Woofer mounting depth	mm	57
Weight of one woofer	kg	0,852

- Woofers: ULTRA Flat construction, Hybrid technology double magnet (neodymium and ferrite) with vented hole, water-repellent treated paper cones, phase plugs new profile, high density rubber surround, curve memory Nomex® spider, DIN size baskets protected by abrasionproof paint, silver-plated lead wires.
- Tweeters: Compact size, neodymium magnet, dome made of Alumax®, silk surround, ultra-light ferrofluid-cooled mobile voice coil, revolving support and accessories for factory location and flush mounting.
- Crossovers included.
- Grilles included.

CX 100



CX 100

