

**POWER FOR THE WAVES**  
**THE PURE MARINE CERTIFIED PRODUCT**

**100W**  
 POWER HANDLING

# HEX 6.5 IC-W

IN-CEILING 6.5" MARINE COAX

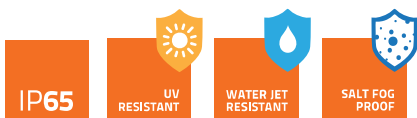


## TECHNICAL SPECIFICATIONS

<b>Component</b>	Two way in-ceiling coaxial	
<b>Size</b>		
Woofers	mm (in.)	165 (6.5)
Tweeter diaphragm	mm (in.)	24 (0.9)
<b>Voice Coil Ø</b>		
Woofers	mm (in.)	25 (1)
Tweeter	mm (in.)	20 (0.8)
<b>Power Handling</b>		
	W peak	100
	W continuous	50
<b>Impedance</b>	Ω	6
<b>Frequency Response</b>	Hz	50 ÷ 22k
<b>Woofers Magnet size D x d x h</b>	mm (in.)	75 x 32 x 15 (2.95 x 1.26 x 0.59)
<b>Tweeter Magnet size D x h</b>	mm (in.)	19 x 3 (0.75 x 0.12)
<b>Weight of one speaker</b>	kg (lb.)	1,75 (3.86)
<b>Woofers Magnet</b>	High density flux ferrite	
<b>Tweeter Magnet</b>	Neodymium	
<b>Cone</b>	Polypropylene with UV inhibitors	
<b>Dome</b>	Tetolon	
<b>Xmech</b>	mm (in.)	±4,8 (0.19)

## ELECTRO-ACOUSTIC PARAMETERS

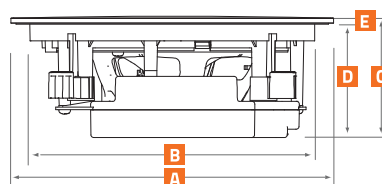
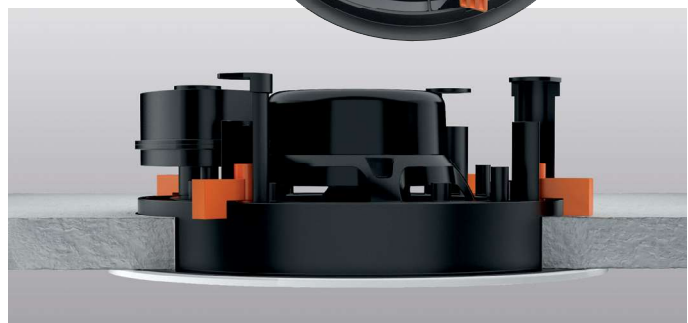
<b>D</b>	mm	125
<b>Xmax</b>	mm	3,4
<b>Re</b>	Ω	5
<b>Fs</b>	Hz	60
<b>Le</b>	mH	0,32
<b>Vas</b>	l	10,48
<b>Mms</b>	g	14,2
<b>Cms</b>	mm/N	0,50
<b>BL</b>	T·m	5,3
<b>Qts</b>		0,81
<b>Qes</b>		0,98
<b>Qms</b>		4,8
<b>Spl</b>	dB	88



From R&D to final product  
**KLIPPEL**  
 since 2005

1. Hertz Pure Marine Certified Product stamp featuring IP65 protection grade, ASTM-D4329 standards for UV resistance and ASTM-B117 for salt fog operability.
2. Totally sealed design including coated crossover filter made by marine-grade PCB to prevent corrosion against salt fog.
3. Edgeless mesh grille with magnetic locking system providing near stealth in-wall/in-ceiling installation.
4. Crossover fine-tuned to optimize sound emission for in-wall/in-ceiling applications.
5. Marine certified 24 mm diaphragm soft dome tweeter designed with FEM simulation to maximize sound projection for in-wall and in-ceiling installation.
6. 25 mm (1") voice coil woofer with 6 Ω impedance, optimized to be driven by any amplifiers system (12 volts, 24 volts, rack amps, ...).
7. Silicone insulated lead wires for extended durability in outdoor application.
8. Fast and easy installation thanks to the robust hooking system.

Totally sealed electronics to prevent corrosion against salt fog.



<b>A</b>	231 mm	9.08 in.
<b>B</b>	203,5 mm	8.01 in.
<b>C</b>	87 mm	3.43 in.
<b>D</b>	81 mm	3.2 in.
<b>E</b>	6 mm	0.23 in.